

Instructions for the ambi-Lancet® Standard and Mini

The ambi-Lancet is a reusable lancing device for the single user. It automatically injects the lancet into and retracts it from the fingertip to obtain a capillary blood sample for glucose monitoring or other tests that require one or two drops of blood. An adjustable tip allows best depth of skin penetration for each individual user.

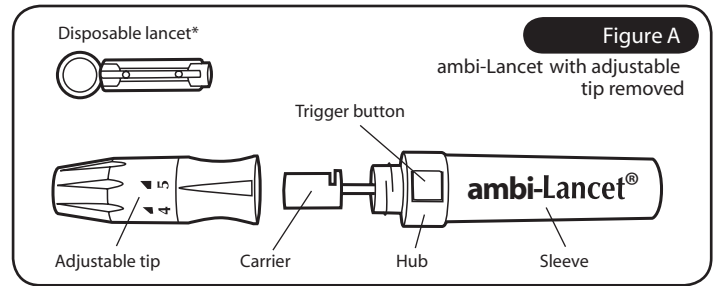
CAUTIONS:

- The ambi-Lancet is intended for the single user. To avoid exposure to contaminants, do not use the ambi-Lancet on multiple users.
- For safety and to prevent cross-contamination, always discard used disposable lancets in an appropriate sharps or biohazard container.
- The ambi-Lancet contains small parts and could be a choking hazard for children.

Instructions for use:

Clean your hands with soap and warm water; dry them thoroughly. Warming your hands will help in obtaining a blood sample. Follow the steps below.

1. Unscrew and remove the adjustable tip.
2. Insert a new disposable lancet firmly into the carrier.
3. Twist off and set aside the protective cover of the disposable lancet.
4. Replace the adjustable tip. Choose a depth of penetration by rotating the top portion of the adjustable tip until the setting number matches the arrow. Settings are based on skin type: 0-2 for soft or thin skin; 3 for average skin 4-5 for thick or calloused skin. For finer adjustments, place the arrow between any 2 numbers.
5. Hold the adjustable tip in one hand and pull on the sleeve with the other hand. The device will be cocked when a click is felt as the ends are pulled apart.
6. Release the sleeve. It will automatically move back to its original position near the hub.
7. Place the ambi-Lancet against the pad of the finger. The best puncture sites are on the middle or ring fingers. Press the trigger button to activate the device.
8. Remove the device from the finger. Wait a few seconds for a blood drop to form. The flow of blood will be helped by keeping the hand warm, by lowering the hand to waist level, and by gentle massage of the finger.
9. Unscrew and remove the adjustable tip. Without touching the used disposable lancet, stick the lancet tip into the protective cover. Grip the carrier firmly and pull the lancet safely out.
10. Discard the used disposable lancet into an appropriate sharps or biohazard container.



Cleaning:

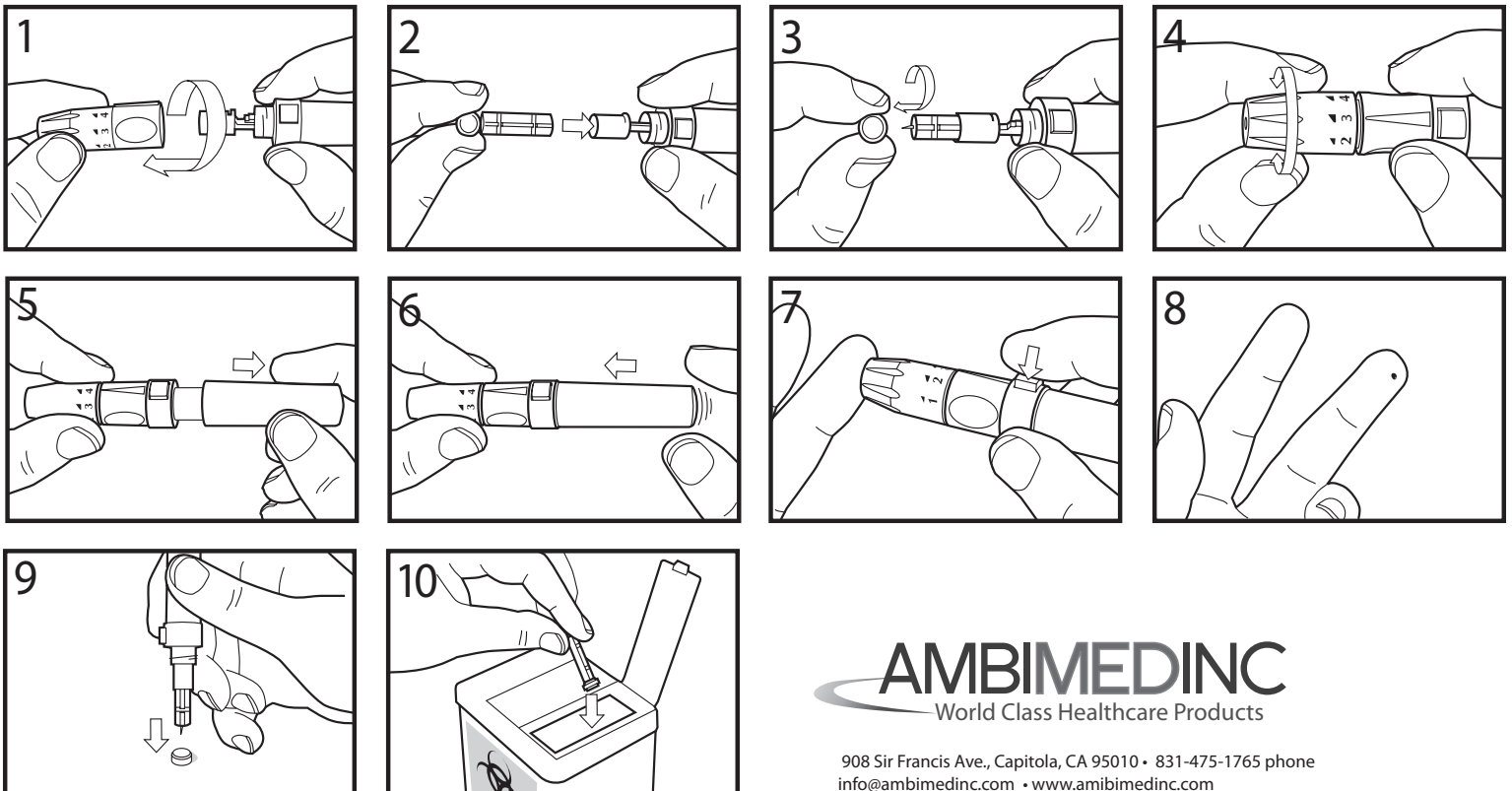
Use a clean damp cloth to wipe the outside of the ambi-Lancet. To avoid rusting the internal spring, do not submerge the device in water or wash the device in the dishwasher. The adjustable tip can be submerged in water after removing it from the device.

Warranty:

This AmbiMedInc product carries a two (2) year warranty against manufacturer's defects in materials and workmanship and against breakage or failure under normal use. This warranty does not cover misuse or abuse. AmbiMedInc will at its option, repair or replace this product at no charge.

Contact AmbiMedInc Customer Support at 831-475-1765 or info@ambimedinc.com or visit the website at www.ambimedinc.com for a list of compatible disposable lancets.

ambi-Lancet is a trademark of Ambi, Inc. All rights reserved.



AMBIMEDINC
World Class Healthcare Products

908 Sir Francis Ave., Capitola, CA 95010 • 831-475-1765 phone
info@ambimedinc.com • www.ambimedinc.com